



PT. CIPTA ANEKA AIR
Water and Waste Water Equipment Specialist

COMPANY PROFILE

PT. CIPTA ANEKA AIR

Kawasan Pergudangan Arcadia
Jl. Daan Mogot Km.21 Blok G18
No. 1,2,3 Kec. Batuceper
Kota Tangerang - Banten 15122
INDONESIA
P : +6221 5958 2271 - 2287
E : sales@ciptaanekaair.co.id



www.ciptaanekaair.co.id

Who We Are

Established in 2008, **PT. CIPTA ANEKA AIR (CAA)** is a water and waste water treatment equipment specialist that focuses to serving pharmaceuticals, food & beverages, cosmetics, palm oil plantations, plastics and other industries in Indonesia.

CAA professional teams with abundant experiences are built based on foundation of integrity, expertise, and customer-centric values to ensure cost effectiveness, quality compliance and on time delivery to our value customers.

CAA networking capabilities have been recognized and entrusted by the worldwide manufactures as reliable distributor to serves our value customers with the highest standards of quality and authenticity.

C - Vision

PT. CIPTA ANEKA AIR Being Recognized as an integral solution for water and waste water treatment equipment specialist in Indonesia.

C - Mission

- CAA build as strong alliance network with our value customers to gained trust and satisfaction.
- CAA view human resource as an investment rather than a cost.
- CAA constantly adopting latest technology and best practice management procedure to guarantee the quality of our products and services.



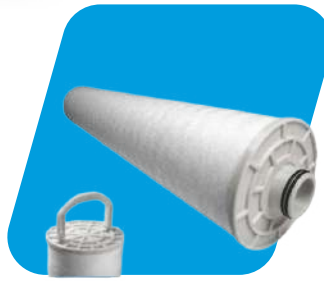
Veolia - Products



RO Membrane



Cartridge Filter



High Flow Filter

Cobetter - Products



Sterilizing Grade Filter

N66

Main Strengths
Good wettability
Positive charge option

Potential Limitation
Compatibility – low pH
Adsorption

PVDF

Low Adsorption
Gamma tolerance

Compatibility – high pH

PES

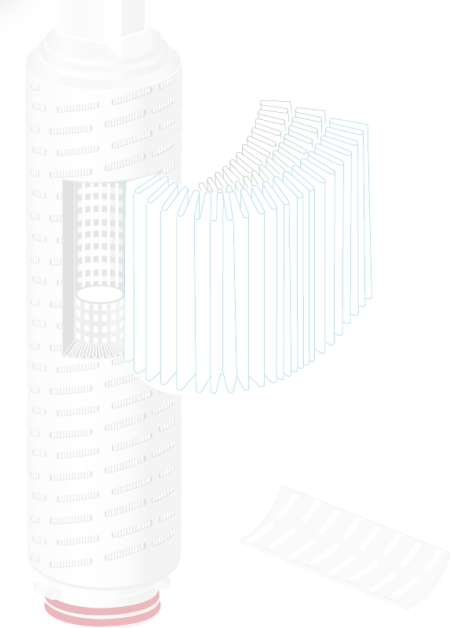
Flow & throughput
pH compatibility

Wettability (for earlier products)

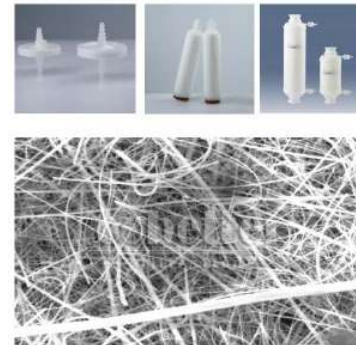
PTFE

Solvent compatibility
pH compatibility

Wetting – aqueous fluids
Not gamma resistant



Clarification-- Glass Fiber



GF

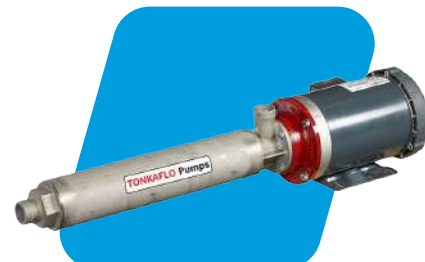
- Extraordinarily high dirt-holding capacity
- Long Service Life
- Low pressure drops, high flow rates
- Glass Fiber media ensures high flow rates and excellent filtration efficiency.

Pore Size Ranges

0.22µm, 0.45µm, 0.65µm, 0.8µm, 1.0µm, 3.0µm, 5.0µm



Ozonia Ozone Generator



Tonkaflo Pump



Ultrafiltration

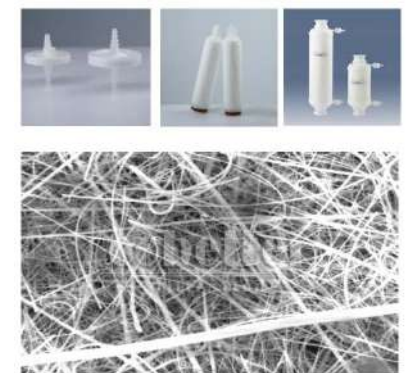
PP

- Composed of multi-layer polypropylene media
- High retention efficiency
- No adhesives or surfactants
- PP media ensures high flow rates and long service life
- Available in CHC, CHT and CHE

Pore Size Ranges

0.5µm, 0.6µm, 0.8µm, 1.5µm, 5.0µm, 10µm, 20µm, 40µm, 70µm, 90µm,

Clarification-- Polypropylene



Electrodeionization System (EDI)



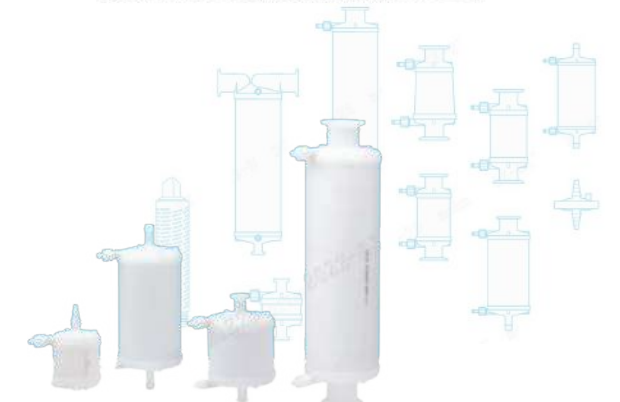
Membrane Bioreactor (MBR)

Sterilizing Grade Gas Filters



● **Biopharma Sterilizing Grade Gas Filters (PTFE) --ACE/AFM**

● **Biopharma Sterilizing Grade Gas Filter (PVDF) --APB**



Cobetter - Products



Cobetter Filter Housing



Single Round Sanitary Housing



Multi Round Sanitary Housing



Multi Round Sanitary Liquid Housing



GAS Filter Housing



Vent Filter Housing

TFF Cassettes



Polyethersulfone PES
Lab packet--- 100cm², 0.11ft²
Lab---0.11m², 1.2ft²
Flow-5--- 0.46m², 5ft²
Regenerated cellulose 3kDa
Flow-25--- 2.33m², 25ft²

UF=Ultrafiltration	Membranes	Type	MWCO	EFA
	E=PES	LA	0003=3kD	001=100cm ²
	R=RC	FL	0005=5kD	010=0.11m ²
			0008=8kD	050=0.46m ²
			0010=10kD	250=2.33m ²
			0030=30kD	
			0050=50kD	
			0100=100kD	
			0300=300kD	

Lifecube AS Single-use



Lifecube 2D/3D Single-use Bags

C - Products



C-Pure Super Meltblown Filter Series



C-Pure Super Pleated Filter Series



C-Pure Super Bag Filter Series

Grundfos - Products



Grundfos In Line Multi Stage



CR1, CR3, CR5, CR10

Small CR



CR64



CR32, CR45

Large CR



CR15, CR20



CR95, CR125, CR155

Extra Large CR

CR1, CR3, CR5, CR10, CR15, CR20, CR32 CR45, CR64, CR95, CR125, CR155

- Impeller & chamber material stainless steel AISI 304.
- Oval Flange Connection (CR1, CR3).
- DIN Flange Connection (CR5, CR10, CR15, CR20, CR32).
- HQQE Cartridge mech. seal.
- Motor efficiency IE3 motor IP 55, 2 Pole Grundfos Blueflux.
- 3 x 380-415 V/50Hz.
- Impeller & chamber material stainless steel AISI 304.
- DIN Flange Connection.
- HQQE Cartridge mech. seal.
- Blueflux efficiency IE3.
- ≥ 30 kW Grundfos equal motor efficiency IE3.
- Motor IP 55, 2 poles.
- 3 x 380-415 V/50Hz.



CRN1, CRN3, CRN5, CRN10

Small CRN



CRN15, CRN20, CRN32, CRN45, CRN64

Large CRN



CRN95, CRN125, CRN155

Extra Large CRN

CRN1, CRN3, CRN5, CRN10, CRN15, CRN20 CRN32, CRN45, CRN64 CRN95, CRN125, CRN155

- Impeller & chamber material stainless steel AISI 316.
- DIN Flange Connection.
- HQV Cartridge mech. seal.
- Motor efficiency IE3 motor IP 55, 2 Pole Grundfos Blueflux.
- 3 x 380-415 V/50Hz.
- All wetted parts SS AISI 316.
- DIN Flange Connection.
- HQV/HBQV Cartridge mech. seal.
- ≤ 22 kW Grundfos Blueflux efficiency IE3.
- ≥ 30 kW Grundfos equal motor efficiency IE3.
- Motor IP 55, 2 pole.
- 3 x 380-415 V/50Hz (CRN45, CRN64).
- All wetted parts SS AISI 316.
- DIN Flange Connection.
- HQV/HBQV Cartridge mech. seal.
- ≤ 22 kW Grundfos Blueflux efficiency IE3.
- ≥ 30 kW Grundfos equal motor efficiency IE3.
- Motor IP 55, 2 pole.
- Motor IP 55, 2 poles.



CRE1, CRE3, CRE5, CRE10, CRE15, CRE20, CRE32, CRE45, CRE64

CRE - With Built in Inverter

CRE1, CRE3 CRE5, CRE10, CRE15, CRE20, CRE32, CRE45, CRE64

- Impeller & chamber material stainless steel AISI 316.
- Threaded RP and DIN Flange.
- HQQE Cartridge mech. seal.
- Motor IE5.
- Motor IP 55, 4000 rpm.
- 3 x 380-500 V/50-60 Hz.
- HMI300 Graphical Display.
- Impeller & chamber material stainless steel AISI 316.
- Threaded RP and DIN Flange.
- HQQE Cartridge mech. seal.
- Motor IE5.
- Motor IP 55, 4000 rpm.
- 3 x 380-500 V/50-60 Hz.
- HMI300 Graphical Display.
- Exclude CIM.



Grundfos Dosing Pumps



(DDA)

SMART Digital diaphragm dosing pump with internal brushless motor drive. High-end solution for complex and demanding applications (Digital Dosing Advanced).



(DDC)

SMART Digital diaphragm dosing pump with internal stepper motor drive. User-friendly at optimum price-performance-ratio (Digital Dosing Convenience).



(DME)

Digital diaphragm dosing pumps with internal step motor drive



(DDE)

SMART Digital diaphragm dosing pump with internal stepper motor drive. Economic Digital Dosing even for basic dosing applications (Digital Dosing Essential).